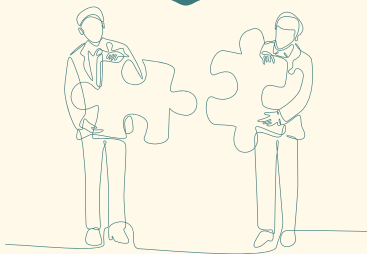


Discover Freiburg & Challenge Yourself



Discover Freiburg & Challenge Yourself

Are you in for a challenge? Do you want to get to know Freiburg and do touristy things?

No matter whether you have just arrived in Freiburg or whether you've been living here for years already - this challenge is perfect for you if you want to get to know the city better and have fun at the same time!

- We have prepared you some cards. Each card belongs to famous sights in Freiburg. To start, pick a card! The first challenge starts now! You are gonna wald around the town with your guide. Watch out, so that you do not miss your sight.
- You have found it! Great! Now ask your guide to give you the information card about your sight. Present your sight to the group!
- Selfie time! Make sure you include your sight in your background! It was worth the challenge, wasn't it?



Discover Freiburg & Challenge Yourself

- Now it's time to do some shopping. Let us buy a post card together and send it to ICM. People there would be happy to know how your adventure in Freiburg is going! Send the postcard to the following address:

**Intercultural Mentoring Program
Service Center Studium
Sedanstr. 6
79098 Freiburg im Breisgau**



- You have walked a lot and experienced a great deal! It's time to treat yourself to some ice-cream or coffee!



- Now that you have gained a first impression of the town, we want you to write a list of the places you would still want to discover (to icm@zv.uni-freiburg.de). We will get together, stroll again through the city, and have some more fun pretty soon!













Säule der Toleranz

Säule der Toleranz















